

# WEDA PUMP

World leader in professional submersible drainage pumps

## SPAREPARTS CATALOGUE

# RL 4140



# SPARE PARTS CATALOGUE

## **RESERVDLSTÄLLNING**

Följande uppgifter ska lämnas vid beställning av reservdelar för att undvika leveransfel :

1. Maskintyp.
2. Vältens serienummer.
3. Antal av önskad reservdel.
4. Reserdelens artikelnummer.
5. Reservedelens benämning.
6. Måttuppgifter vid beställning av metervara.

## **ERSATZTEILBESTELLUNG**

Zur Vermeidung von Fehllieferungen sind bei der Bestellung von Ersatzteilen folgende Angaben zu machen :

1. Mashinentyp.
2. Herstellungsnummer.
3. Bestellmenge. (Quantity)
4. Ersatzteilbenennung. (Part N°)
5. Ersatzteilbenennung. (Description)
6. Massangaben bei Bestellung von Meterware.

## **PEDIDO DE RECAMBIOS**

Para evitar errores en las entregas, deberá indicarse los siguientes datos al hacer un pedido de recambios :

1. Tipo de máquina.
2. Número de serie.
3. Cantidad de piezas deseadas. (Quantity)
4. Número de artículo de la pieza de recambio. (Part N°)
5. Denominación de la pieza. (Description)
6. Indíquese la medida al solicitar un artículo que se expide por metros.

## **RESERVEDELEN BESTELLEN**

Om foutieve leveringen te voorkomen, vermeld bij uw bestelling de volgende informatie:

1. Type van de machine (pomp)
2. Machine serienummer
3. Aantal benodigd
4. Onderdeel nummer(s)
5. Onderdeel omschrijving
6. Afmetingen indien per lengte besteld wordt.

## **ORDERING SPARE PARTS**

To avoid errors in delivery, please give the following information when ordering spare parts :

1. Type of machine.
2. Machine serial number.
3. Quantity required.
4. Part number.
5. Parts description.
6. Dimensions when ordering per length.

## **ORDINI DI RICAMBI**

Per evitare errori nelle consegne di ricambi, Vi preghiamo di comunicarci le seguenti informazioni al momento dell'ordinazione :

1. Tipo di macchina.
2. Numero di serie della macchina.
3. Quantità dei pezzi desiderati. (Quantity)
4. Numero di codice del pezzo. (Part N°)
5. Descrizione del pezzo di ricambio. (Description)
6. Misura, in caso di ordine per metro.

## **COMMANDE DE PIÈCES DE RECHANGE**

Les indications suivantes doivent être fournies lors de la commande de pièces de rechange, afin d'éviter toute erreur de livraison :

1. Type de machine.
2. Numéro de série.
3. Quantité désirée de pièce de rechange. (Quantity)
4. Numéro de la pièce de rechange. (Part N°)
5. Description de la pièce de rechange. (Description)
6. Longueur en cas de commande par mètre.

## SPARE PARTS

Note : To place spare parts order, use :

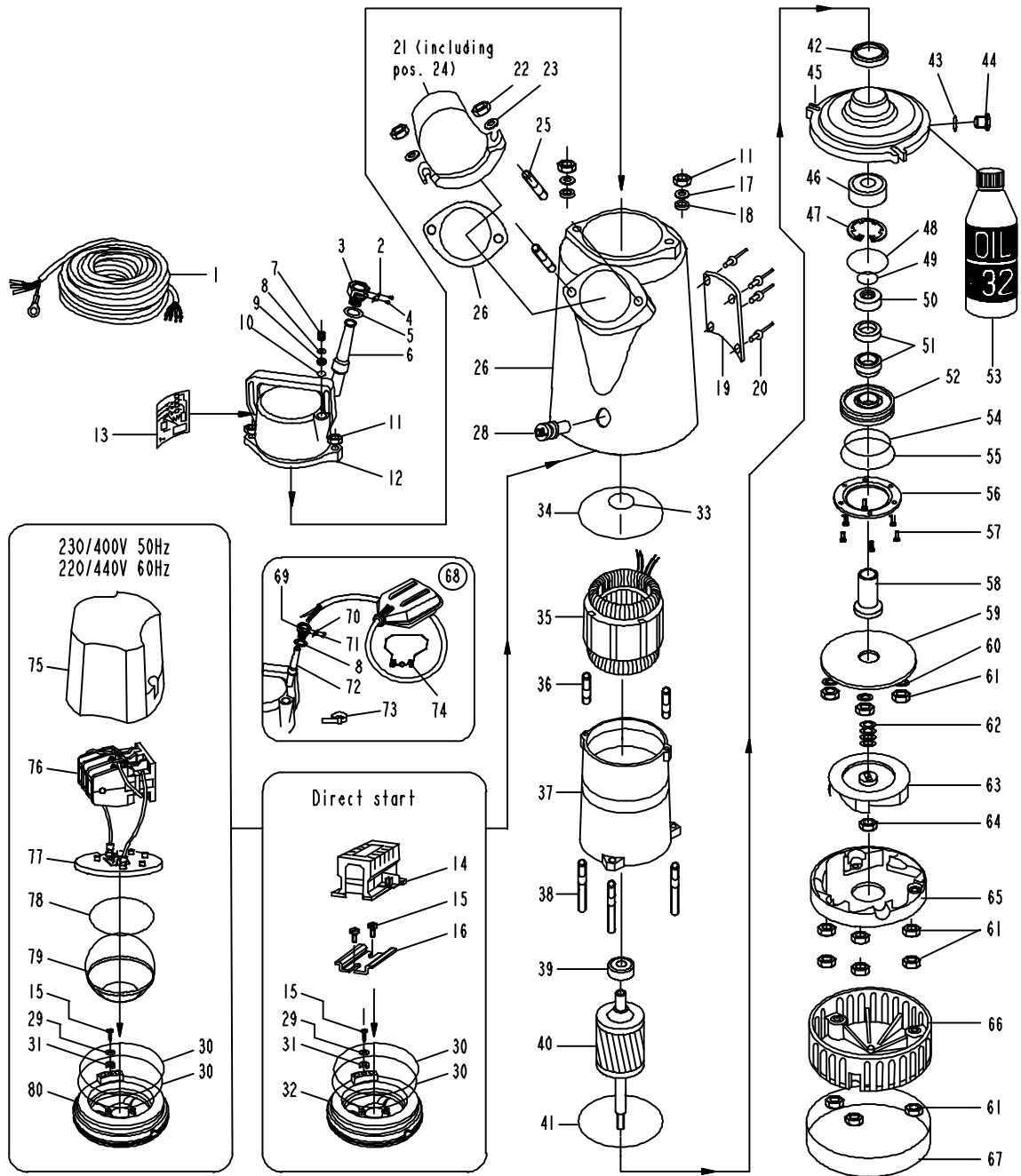
- The serial number of the machine
- The description and part number;

### RL 4140

RL 4140							
Ref	Designation	P/N	Qty -3~-	Ref	Designation	P/N	Qty -3~-
1	Cable 4 x 1.5 mm <sup>2</sup> , 20m	W214847	1	36	Stud bolt	W69617	2
	Cable CSA SOW 4xAWG16, 20m	W367175	1	37	Inner casing	W724012	1
2	Cable clamp	W214638	1	38	Stud bolt	W224539	3
3	Cable inlet cpl. (2, 4, 5)	W214639	1	39	Ball bearing, upper	W61007	1
4	Screw	W78670	1	40	Rotor with shaft	W724056	1
5	Washer	W214493	1	41	O ring	W65119	1
6	Cable sleeve	W214838	1	42	Radial seal	W740198	1
7	Blind plug	W214828		43	O ring	W65006	1
8	Washer	W214825	1	44	Oil plug	W254042	1
9	Rubber gasket	W214829	1	45	Bearing holder, lower	W720024	1
10	Washer	W214833	1	46	Ball bearing lower	W61021	1
11	Nut	W84207	4	47	Circlip	W50659	1
12	Contacteur cover	W212849	1	48	O ring	W65103	1
13	Wiring diagram 230/400V 50Hz, 220/440V 60Hz	W740041	1	49	O ring	W740293	1
	Wiring diagram 110-240V □	W214836	1	50	Seal holder	W740280	1
	Wiring diagram 400/500V Y	W214835	1	51	Mechanical seal	W740199	1
14	Contacteur See below	-	1	52	Sealing cover	W740279	1
15	Screw	W209902	3	54	O ring	W65101	1
16	Contacteur holder	W214871	1	55	O ring	W65102	1
17	Washer	W51163	2	56	Flange plate	W224910	1
18	Teflon washer	W214622	2	57	Screw	W76242	6
19	Data plate (CE)	W743583	1	58	Distance sleeve	W740281	1
	Data plate (CSA)	W743612	1	59	Wear plate	W223522	1
20	Rivet	W65431	4	60	Washer	W51168	3
21	Discharge 3" for hose	W203562	1	61	Nut	W84209	12
	Discharge 3" BSP thread	W203484	1	62	Trimming spacer	W224538	4
	Discharge 3" NPT thread	W203570	1	63	Impeller 50Hz	W243236	1
	Discharge 4" for hose	W203564	1		Impeller 60Hz	W243237	1
	Discharge 4" BSP thread	W203482	1	64	Nut	W604272	1
	Discharge 4" NPT thread	W203572	1	65	Diffusor	W242231	1
22	Nut	W84210	2	66	Strainer	W222527	1
23	Washer	W51170	2	68	Float switch	W214842	1
24	Discharge packing	W743466	1	69	Cable inlet cpl. (8, 70, 77)	W743411	1
25	Stud bolt	W69642	2	72	Cable sleeve	W214826	1
26	Outer casing	W241229	1	73	Cable tie	W209900	1
28	Rubber plug	W224880	1	74	Float holder clamp	W213843	1
29	Spring washer	W58956	1	75	Insulation cap lower	W213381	1
30	O Ring	W65112	2	76	Contacteur See below	-	1
31	Washer	W45883	1	77	Terminal block	W213202	1
32	Bearing bracket upper	W208138	1	78	O Ring	W65106	1
33	O ring	W65021	1	79	Insulation cap lower	W214387	1
34	O ring	W65115	1	80	Bearing bracket upper	W208048	1
35	Stator See below	-	1				

### STATOR and CONTACTOR Part Numbers

Power supply	Stator	Contacteur ass'y (pos 14)	Stator Unit (pos 35 + 37)
380-415V - 3 - 50Hz	W724055	W743441	W743591
440V - 3 - 60Hz	W724055	W743441	W743591



# WEDA PUMP

World leader in professional submersible drainage pumps

*page left intentionally blank for your convenience.*

# WEDA PUMP

World leader in professional submersible drainage pumps

## **Delta Pompen B.V.**

P.O. Box 310  
7570 AH Oldenzaal  
The Netherlands

Tel. : +31 (0)541 571667

Fax.: +31 (0)84 2242375

E-mail: [info@wedapump.com](mailto:info@wedapump.com)

Internet: <http://www.wedapump.com>

Lübeckstraat 12  
7575 EE Oldenzaal

### SERVICE AND GUARANTEE.

WEDAPUMP.COM is represented worldwide by a well-established service organization. Contact your local WEDAPUMP sales office if you require more information about servicing. Or left mentioned address.

wedapump.com reserves the right to change specifications without notice