

WEDA PUMP

World leader in professional submersible drainage pumps

SPAREPARTS CATALOGUE

RL 4060



SPARE PARTS CATALOGUE

RESERVDDELSTÄLLNING

Följande uppgifter ska lämnas vid beställning av reservdelar för att undvika leveransfel :

1. Maskintyp.
2. Vältens serinummer.
3. Antal av önskad reservdel.
4. Reserdelens artikelnummer.
5. Reservedelens benämning.
6. Måttuppgifter vid beställning av metervara.

ERSATZTEILBESTELLUNG

Zur Vermeidung von Fehllieferungen sind bei der Bestellung von Ersatzteilen folgende Angaben zu machen :

1. Mashinentyp.
2. Herstellungsnummer.
3. Bestellmenge. (Quantity)
4. Ersatzteilbenennung. (Part N°)
5. Ersatzteilbenennung. (Description)
6. Massangaben bei Bestellung von Meterware.

PEDIDO DE RECAMBIOS

Para evitar errores en las entregas, deberá indicarse los siguientes datos al hacer un pedido de recambios :

1. Tipo de máquina.
2. Número de serie.
3. Cantidad de piezas deseadas. (Quantity)
4. Número de artículo de la pieza de recambio. (Part N°)
5. Denominación de la pieza. (Description)
6. Indíquese la medida al solicitar un artículo que se expide por metros.

RESERVEDELEN BESTELLEN

Om foutieve leveringen te voorkomen, vermeld bij uw bestelling de volgende informatie:

1. Type van de machine (pomp)
2. Machine serienummer
3. Aantal benodigd
4. Onderdeel nummer(s)
5. Onderdeel omschrijving
6. Afmetingen indien per lengte besteld wordt.

ORDERING SPARE PARTS

To avoid errors in delivery, please give the following information when ordering spare parts :

1. Type of machine.
2. Machine serial number.
3. Quantity required.
4. Part number.
5. Parts description.
6. Dimensions when ordering per length.

ORDINI DI RICAMBI

Per evitare errori nelle consegne di ricambi, Vi preghiamo di comunicarci le seguenti informazioni al momento dell'ordinazione :

1. Tipo di macchina.
2. Numero di serie della macchina.
3. Quantità dei pezzi desiderati. (Quantity)
4. Numero di codice del pezzo. (Part N°)
5. Descrizione del pezzo di ricambio. (Description)
6. Misura, in caso di ordine per metro.

COMMANDE DE PIÈCES DE RECHANGE

Les indications suivantes doivent être fournies lors de la commande de pièces de rechange, afin d'éviter toute erreur de livraison :

1. Type de machine.
2. Numéro de série.
3. Quantité désirée de pièce de rechange. (Quantity)
4. Numéro de la pièce de rechange. (Part N°)
5. Description de la pièce de rechange. (Description)
6. Longueur en cas de commande par mètre.

SPARE PARTS

Note : To place spare parts order, use :

- The serial number of the machine
- The description and part number;

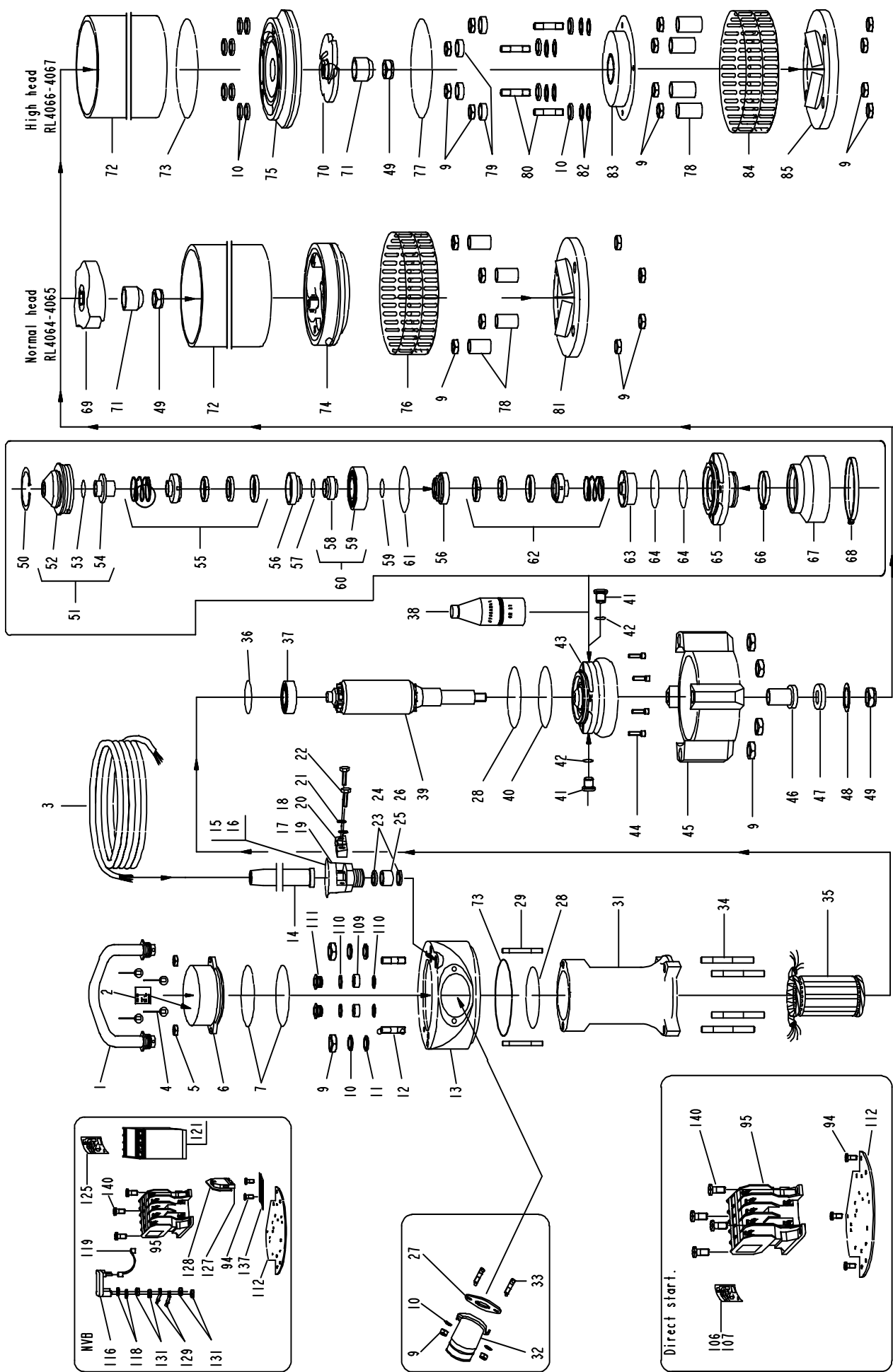
RL 4060									
Ref	Designation	P/N	Qty		Ref	Designation	P/N	Qty	
			NH	HH				NH	HH
1	Handle complete	W253016	1	1	59	Ball bearing	W61010	1	1
2	Data plate (CE)	W743583	1	1	60	Bearing unit Incl pos 58,59	W254038	1	1
	Data plate (CSA)	W743612	1	1	61	O-ring	W65105	1	1
3	Cable 4x2.5mm ² 20m	W204082	1	1	62	Lower seal *	W254077	1	1
	Cable 4x4 mm ² 20m	W273089	1	1		Lower seal **	W743564	1	1
	Cable SOW 4xAWG14 20m	W367177	1	1	63	Seal holder *	W254342	1	1
4	Rivet	W65430	4	4		Seal holder **	W743566	1	1
5	Nut	W84209	2	2	64	O-ring	W65175	2	2
6	Contacto cover	W252039	1	1	65	Bearing bracket	W252339	1	1
	Contacto cover for NVB	W252210	1	1	66	Seal clamp	W254344	1	1
7	O-ring	W254073	2	2	67	Oil bag	W253341	1	1
9	Nut	W84210	10	14	68	Seal clamp	W254345	1	1
10	Washer	W51170	10	16	69	Impeller 50Hz	W252224	1	-
11	Teflon washer	W254415	2	2		Impeller 60Hz	W252225	1	-
12	Stud bolt	W69623	2	2	70	Impeller 50Hz	W251352	-	1
13	Top bracket	W714022	1	1		Impeller 60Hz	W251423	-	1
14	Cable sleeve 4x2.5 mm ²	W204108	1	1	71	Protective housing	W254231	1	1
	Cable sleeve 4x4 mm ²	W209560	1	1	72	Outer casing	W251218	1	1
15	Cable inlet cpl 4x4mm ² Incl. Pos 19,20,21,22,23 and 25	W209563	1	1	73	O-ring	W254085	1	2
16	Cable inlet cpl 4x2.5mm ² Incl. Pos 17,18,21,22,14 and26	W204089	1	1	74	Diffusor	W252102	1	-
27	Discharge gasket	W743466	1	1	75	Diffusor cpl	W251351	-	1
28	O-ring	W65121	2	2	76	Strainer	W263031	1	-
29	Stud bolt	W254304	2	2	77	O-ring	W65136	-	1
31	Inner casing	W714001	1	1	78	Distance tube	W254223	4	4
32	Discharge 4" for hose	W203564	1	1	79	Plug	W254429	-	4
	Discharge 4" BSP thread	W203482	1	1	80	Stud bolt	W254359	-	4
	Discharge 4" NPT thread	W203572	1	1	81	Base plate	W252221	1	-
	Discharge 3" for hose	W203562	1	1	82	Trimming spacer	W214194	-	12
	Discharge 3" BSP thread	W203484	1	1	83	Diffusor centre	W271026	-	1
	Discharge 3" NPT thread	W203570	1	1	84	Strainer	W253356	-	1
33	Stud bolt	W69642	2	2	85	Base plate	W252354	-	1
34	Stud bolt	W254226	4	-	90	Terminal block	W213202	1	1
	Stud bolt	W254358	-	4	91	O-ring	W65106	1	1
35	Stator See page 14	-	-	-	94	Screw	W78666	5	6
36	O-ring	W65024	1	1	95	Contacto See page 14	-	-	-
37	Ball bearing	W61001	1	1	106	Wiring diagram ∞3-phases	W740046	1	1
38	Oil 1,4 l	W367280	1	1	107	Wiring diagram Y 3-phases	W740047	1	1
39	Rotor	W724001	1	1	109	Packing box	W254408	2	2
40	O-ring	W65033	1	1	110	Washer	W294126	4	4
41	Oil plug	W254042	2	2	111	Screw	W294127	2	2
42	O-ring	W65006	2	2	112	contacto holder	W733434	1	1
43	Seal unit complete	W253362	1	1	116	Electrode cpl.	W208106	1	-
44	Screw	W75659	4	4	118	Washer	W209673	2	-
45	Wear plate	W252021	1	1	119	Short circuit	W209674	1	-
46	Driving sleeve	W254228	1	1	121	Electronic unit NVB 400V 60Hz	W209805	1	-

RL 4060 (continued)									
Ref	Designation	P/N	Qty		Ref	Designation	P/N	Qty	
			NH	HH				NH	HH
47	Support washer	W254230	1	1		Electronic unit NVB 500V 50Hz	W209930	1	-
48	Trimming spacer	W254229	8	8	121	Electronic unit NVB 440V 60Hz	W367186	1	-
49	Nut	W254232	2	2		Electronic unit NVB 220V 50Hz	W367192	1	-
50	Circlips	W50671	1	1		Electronic unit NVB 240V 60Hz	W367193	1	-
51	Seal casing cpl Incl pos 52,53 54*	W254363	1	1	125	Wiring diagram NVB	W209865	1	-
	Seal casing cpl Incl pos 52,53 and 54**	W743568	1	1	127	Terminal block	W254490	1	-
53	O-ring	W65096	1	1	128	Sectional disc	W254491	1	-
55	Upper seal *	W254063	1	1	129	Fat pin	W50331	2	-
	Upper seal **	W743563	1	1	131	Nut	W84205	4	-
56	Holder	W254031	2	2	137	NVB holder	W214871	1	-
57	O-ring	W65016	2	2	140	Screw	W78667	4	4
58	Bearing bushing	W254032	1	1					

* Pumps with manufacturing N° below 1971 . ** Pumps with manufacturing N° above 2000 .

STATOR and CONTACTOR Part Numbers

Power supply	Stator	Contactore complete	Stator Unit (31 + 35)
380-400V - 3 - 50Hz	W724000	W743623	W743475
415V-3-50Hz	W724000	W743623	W743475
440-460V - 3 - 60Hz	W724000	W743623	W743475
500V - 3 - 50Hz	W724018	W367141	W743470
220V - 3 - 50Hz	W724000	W367145	W743475
230/400V - 3 - 50Hz	W724000	W367178	W743475



WEDA PUMP

World leader in professional submersible drainage pumps

page left intentionally blank for your convenience.

WEDA PUMP

World leader in professional submersible drainage pumps

Delta Pompen B.V.

P.O. Box 310
7570 AH Oldenzaal
The Netherlands
Tel. : +31 (0)541 571667
Fax.: +31 (0)541 571669
E-mail: info@wedapump.com
Internet: <http://www.wedapump.com>

Lübeckstraat 12
7575 EE Oldenzaal

SERVICE AND GUARANTEE.

WEDAPUMP.COM is represented worldwide by a well-established service organization. Contact your local WEDAPUMP sales office if you require more information about servicing. Or left mentioned address.

wedapump.com reserves the right to change specifications without notice