

WEDA PUMP

World leader in professional submersible drainage pumps

SPAREPARTS CATALOGUE

RL 2030



SPARE PARTS CATALOGUE

RESERVDDELSTÄLLNING

Följande uppgifter ska lämnas vid beställning av reservdelar för att undvika leveransfel :

1. Maskintyp.
2. Vältens serienummer.
3. Antal av önskad reservdel.
4. Reserdelens artikelnummer.
5. Reservedelens benämning.
6. Måttuppgifter vid beställning av metervara.

ERSATZTEILBESTELLUNG

Zur Vermeidung von Fehllieferungen sind bei der Bestellung von Ersatzteilen folgende Angaben zu machen :

1. Mashinentyp.
2. Herstellungsnummer.
3. Bestellmenge. (Quantity)
4. Ersatzteilbenennung. (Part N°)
5. Ersatzteilbenennung. (Description)
6. Massangaben bei Bestellung von Meterware.

PEDIDO DE RECAMBIOS

Para evitar errores en las entregas, deberá indicarse los siguientes datos al hacer un pedido de recambios :

1. Tipo de máquina.
2. Número de serie.
3. Cantidad de piezas deseadas. (Quantity)
4. Número de artículo de la pieza de recambio. (Part N°)
5. Denominación de la pieza. (Description)
6. Indíquese la medida al solicitar un artículo que se expide por metros.

RESERVEDELEN BESTELLEN

Om foutieve leveringen te voorkomen, vermeld bij uw bestelling de volgende informatie:

1. Type van de machine (pomp)
2. Machine serienummer
3. Aantal benodigd
4. Onderdeel nummer(s)
5. Onderdeel omschrijving
6. Afmetingen indien per lengte besteld wordt.

ORDERING SPARE PARTS

To avoid errors in delivery, please give the following information when ordering spare parts :

1. Type of machine.
2. Machine serial number.
3. Quantity required.
4. Part number.
5. Parts description.
6. Dimensions when ordering per length.

ORDINI DI RICAMBI

Per evitare errori nelle consegne di ricambi, Vi preghiamo di comunicarci le seguenti informazioni al momento dell'ordinazione :

1. Tipo di macchina.
2. Numero di serie della macchina.
3. Quantità dei pezzi desiderati. (Quantity)
4. Numero di codice del pezzo. (Part N°)
5. Descrizione del pezzo di ricambio. (Description)
6. Misura, in caso di ordine per metro.

COMMANDE DE PIÈCES DE RECHANGE

Les indications suivantes doivent être fournies lors de la commande de pièces de rechange, afin d'éviter toute erreur de livraison :

1. Type de machine.
2. Numéro de série.
3. Quantité désirée de pièce de rechange. (Quantity)
4. Numéro de la pièce de rechange. (Part N°)
5. Description de la pièce de rechange. (Description)
6. Longueur en cas de commande par mètre.

SPARE PARTS

Note :

To place spare parts order, use the serial number of the machine and the description and part number;

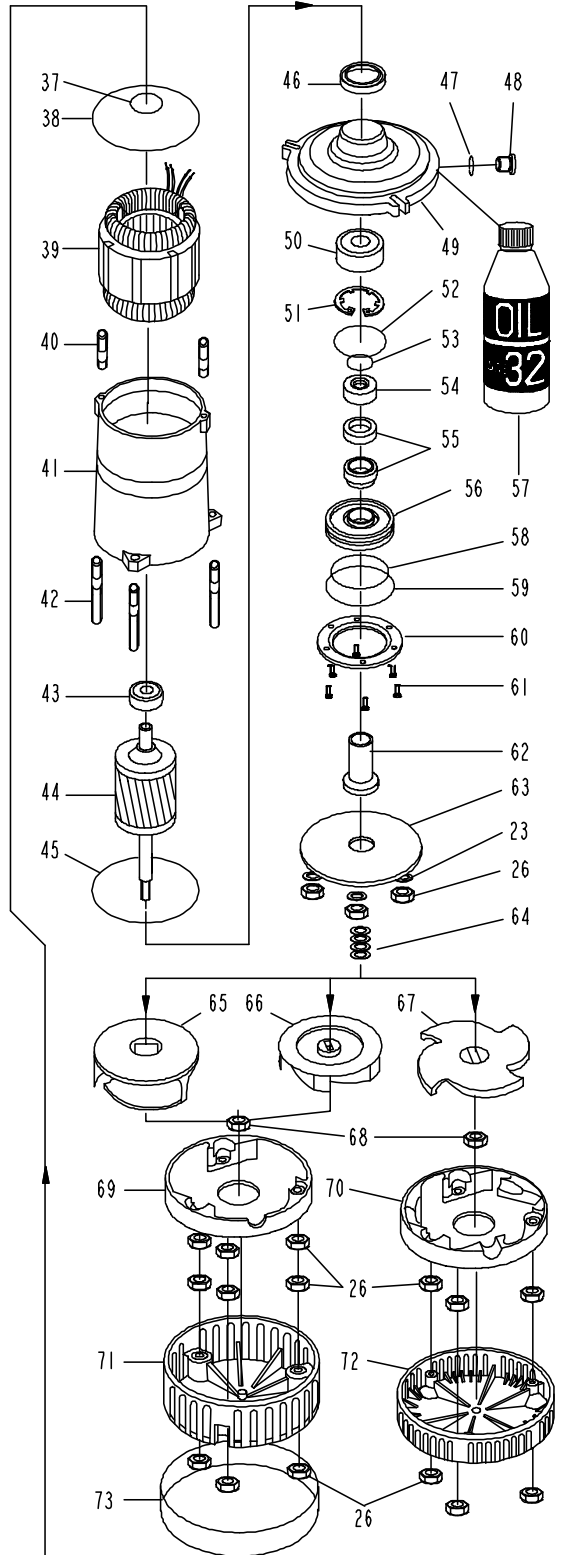
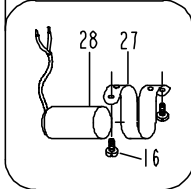
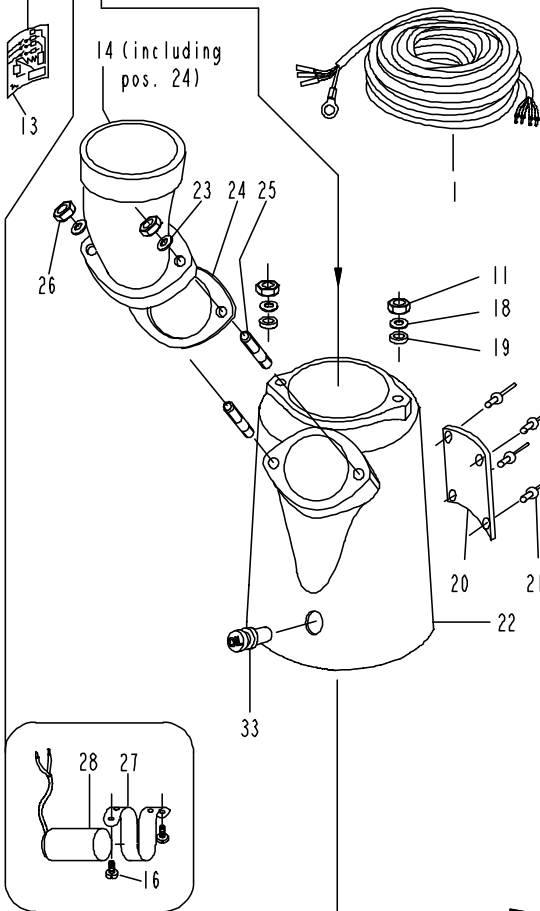
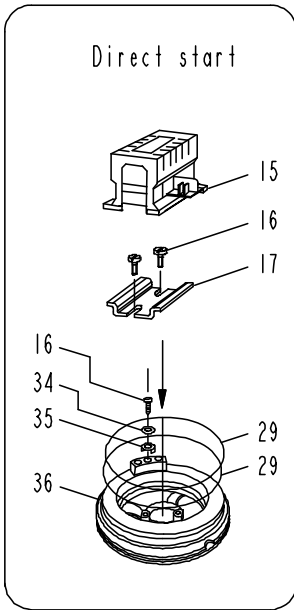
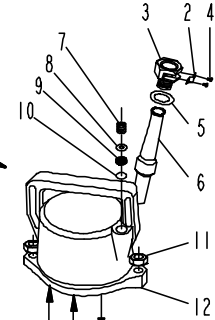
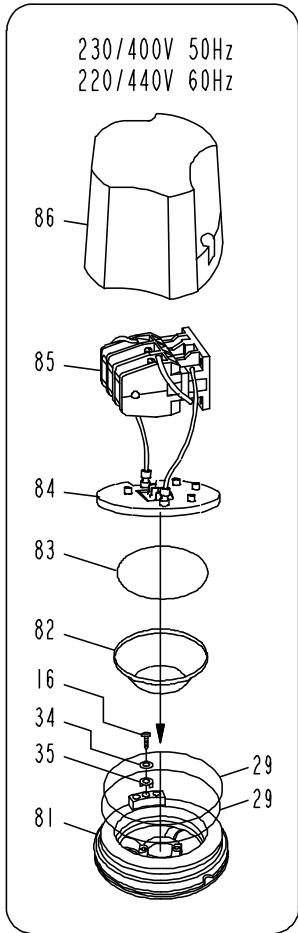
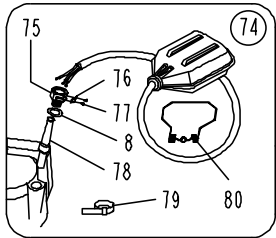
RL 2030									
Ref	Designation	P/N	Qty		Ref	Designation	P/N	Qty	
			1~	3~				1~	3~
1	Cable 3 x 2.5mm ² , 20 m	W224899	1	-	38	O ring	W65115	1	1
	Cable 4 x 1.5 mm ² , 20m	W214847	-	1	39	Stator See page 13		-	-
	Cable CSA SOW 3xAWG14, 20m	W367176	1	-	40	Stud bolt	W69617	2	2
	Cable CSA SOW 4xAWG16, 20m	W367175	-	1	41	Inner casing	W724012	1	1
3	Cable inlet cpl. (2, 4, 5)	W214639	1	1	42	Stud bolt	W224539	3	3
6	Cable sleeve	W214394	1	-	43	Ball bearing, upper	W61007	1	1
	Cable sleeve	W214838	-	1	44	Rotor	W724002	1	-
7	Blind plug	W214828	1	1		Rotor	W724003	-	1
8	Washer	W214825	1	1	45	O ring	W65119	1	1
9	Rubber gasket	W214829	1	1	46	Radial seal	W740198	1	1
10	Washer	W214833	1	1	47	O ring	W65006	1	1
11	Nut	W84207	4	4	48	Oil plug	W254042	1	1
12	Contacteur cover	W212849	1	1	49	Bearing holder, lower	W720024	1	1
13	Wiring diagram 1 phase	W214834	1	-	50	Radial ball bearing	W61021	1	1
	Wiring diagram □	W214836	-	1	51	Circlip	W50659	1	1
	Wiring diagram Y	W214835	-	1	52	O ring	W65103	1	1
14	Discharge 3" for hose*	W224553	1	1	53	O ring	W740293	1	1
	Discharge 3" BSP thread*	W224554	1	1	54	Seal holder	W740280	1	1
	Discharge 3" NPT thread*	W224556	1	1	55	Mechanical seal	W740199	1	1
	Discharge 3" for hose**	W203562	1	1	56	Sealing cover	W740279	1	1
	Discharge 3" BSP thread**	W203484	1	1	58	O ring	W65101	1	1
	Discharge 3" NPT thread*	W203570	1	1	59	O ring	W65102	1	1
	Discharge 4" for hose**	W203564	1	1	60	Flange plate	W224910	1	1
	Discharge 4" BSP-thread**	W203482	1	1	61	Screw	W76242	6	6
	Discharge 4" NPT thread**	W203572	1	1	62	Distance sleeve	W740281	1	1
15	Contacteur See page 13		-	-	63	Wear plate	W223522	1	1
16	Screw	W209902	5	4	64	Trimming spacer	W224538	4	4
17	Contacteur holder	W214871	1	1	65	Impeller 60Hz low pressure	W223610	1	1
18	Washer	W51163	2	2	66	Impeller 50 Hz low pressure	W243237	1	1
19	Teflon washer	W214622	2	2	67	Impeller 50 Hz medium	W223516	1	1
20	Data plate (CE)	W743583	1	1		Impeller 60 Hz medium	W223601	1	1
	Data plate (CSA)	W743612	1	1	68	Nut	W604272	1	1
21	Rivet	W65431	4	4	69	Diffusor low pressure 50Hz	W242231	1	1
22	Outer casing*	W221525	1	1		Diffusor low pressure 60Hz	W222587	1	1
	Outer casing**	W241229	1	1	70	Diffusor med.pressure 60Hz	W222523	1	1
23	Washer*	W51168	5	5	71	Strainer low pressure	W222527	1	1
	Washer**	W51170	5	5	72	Strainer medium pressure	W222526	1	1
24	Discharge gasket*	W224544	1	1		Stainless strainer	W714021	o	o
	Discharge gasket**	W743466	1	1	74	Float switch	W214842	1	1
25	Stud bolt*	W69623	2	2	75	Cable inlet cpl. (8, 76, 77)	W743411	1	1
	Stud bolt**	W69642	2	2	78	Cable sleeve	W214826	1	1
26	Nut*	W84209	14	14	79	Clamp	W209900	1	1
	Nut**	W84210	14	14	80	Float holder clamp	W213843	1	1
27	Capacitor holder	W214841	1	-	81	Seal holder upper	W208048	1	1
28	Capacitor compl. 50µF	W743418	1	-	82	Insulation cap lower	W214387	-	1
29	O ring	W65112	2	2	83	O Ring	W65106	-	1
33	Rubber plug	W224880	1	1	84	Terminal block	W213202	-	1
34	Spring washer	W58956	1	1	85	Contacteur See page 13	-	-	-
35	Cable clamp	W45883	1	1	86	Insulation cap upper	W213381	-	1
36	Bearing bracket, upper	W208138	1	1					
37	O ring	W65021	1	1					

* pumps with manufacturing N° below 3500 (with 3" discharge hole in outer casing) o = option

** pumps with manufacturing N° above 3500 (with 4" discharge hole in outer casing)

STATOR and CONTACTOR Part Numbers

Power supply	Stator	Contactora	Stator Unit (39 + 41)
220-240V - 1 - 50Hz	W724054	W209923	W743589
380-415V - 3 - 50Hz	W724004	W743441	W743454
220-240V - 1 - 60Hz	W724053	W209923	W743588
460V - 3 - 60Hz	W724009	W743441	W743455



WEDA PUMP

World leader in professional submersible drainage pumps

page left intentionally blank for your convenience.

WEDA PUMP

World leader in professional submersible drainage pumps

Delta Pompen B.V.

P.O. Box 310
7570 AH Oldenzaal
The Netherlands

Tel. : +31 (0)541 571667

Fax.: +31 (0)84 2242375

E-mail: info@wedapump.com

Internet: <http://www.wedapump.com>

Lübeckstraat 12
7575 EE Oldenzaal

SERVICE AND GUARANTEE.

WEDAPUMP.COM is represented worldwide by a well-established service organization. Contact your local WEDAPUMP sales office if you require more information about servicing. Or left mentioned address.

wedapump.com reserves the right to change specifications without notice