

# WEDA PUMP

World leader in professional submersible drainage pumps

## SPAREPARTS CATALOGUE

# RL 2010



# SPARE PARTS CATALOGUE

## **RESERVDLSTÄLLNING**

Följande uppgifter ska lämnas vid beställning av reservdelar för att undvika leveransfel :

1. Maskintyp.
2. Vältens serinummer.
3. Antal av önskad reservdel.
4. Reserdelens artikelnummer.
5. Reservedelens benämning.
6. Måttuppgifter vid beställning av metervara.

## **ERSATZTEILBESTELLUNG**

Zur Vermeidung von Fehllieferungen sind bei der Bestellung von Ersatzteilen folgende Angaben zu machen :

1. Mashinentyp.
2. Herstellungsnummer.
3. Bestellmenge. (Quantity)
4. Ersatzteilbenennung. (Part N°)
5. Ersatzteilbenennung. (Description)
6. Massangaben bei Bestellung von Meterware.

## **PEDIDO DE RECAMBIOS**

Para evitar errores en las entregas, deberá indicarse los siguientes datos al hacer un pedido de recambios :

1. Tipo de máquina.
2. Número de serie.
3. Cantidad de piezas deseadas. (Quantity)
4. Número de artículo de la pieza de recambio. (Part N°)
5. Denominación de la pieza. (Description)
6. Indíquese la medida al solicitar un artículo que se expide por metros.

## **RESERVEDELEN BESTELLEN**

Om foutieve leveringen te voorkomen, vermeld bij uw bestelling de volgende informatie:

1. Type van de machine (pomp)
2. Machine serienummer
3. Aantal benodigd
4. Onderdeel nummer(s)
5. Onderdeel omschrijving
6. Afmetingen indien per lengte besteld wordt.

## **ORDERING SPARE PARTS**

To avoid errors in delivery, please give the following information when ordering spare parts :

1. Type of machine.
2. Machine serial number.
3. Quantity required.
4. Part number.
5. Parts description.
6. Dimensions when ordering per length.

## **ORDINI DI RICAMBI**

Per evitare errori nelle consegne di ricambi, Vi preghiamo di comunicarci le seguenti informazioni al momento dell'ordinazione :

1. Tipo di macchina.
2. Numero di serie della macchina.
3. Quantità dei pezzi desiderati. (Quantity)
4. Numero di codice del pezzo. (Part N°)
5. Descrizione del pezzo di ricambio. (Description)
6. Misura, in caso di ordine per metro.

## **COMMANDE DE PIÈCES DE RECHANGE**

Les indications suivantes doivent être fournies lors de la commande de pièces de rechange, afin d'éviter toute erreur de livraison :

1. Type de machine.
2. Numéro de série.
3. Quantité désirée de pièce de rechange. (Quantity)
4. Numéro de la pièce de rechange. (Part N°)
5. Description de la pièce de rechange. (Description)
6. Longueur en cas de commande par mètre.

## SPARE PARTS

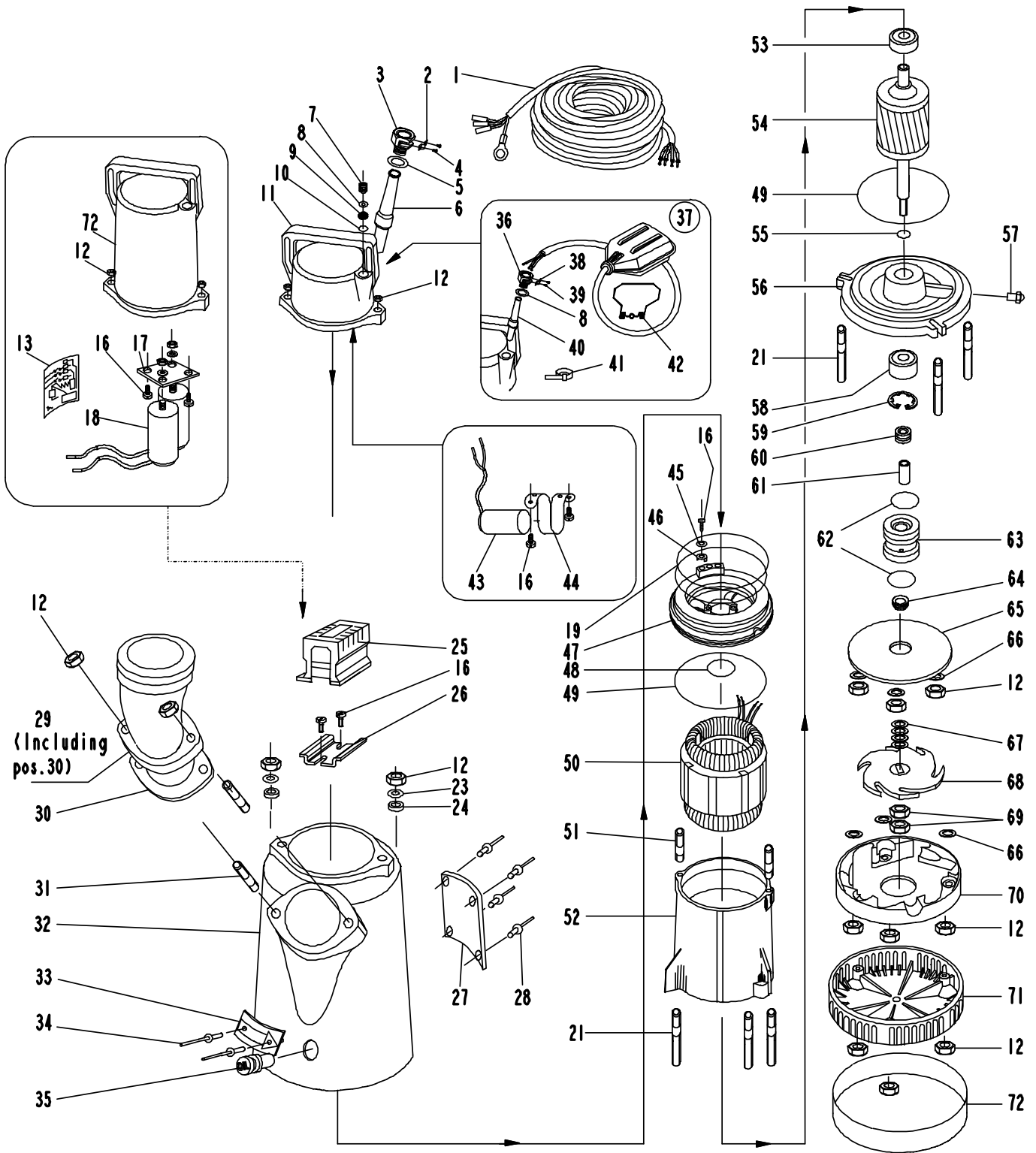
Note : To place spare parts order, use :

- The serial number of the machine
- The description and part number.

RL 2010											
Ref	Designation	P/N	Qty			Ref	Designation	P/N	Qty		
			110 V -1 ~	220 - 240 V -1~	- 3 ~-				110 V -1 ~	220 - 240 V -1~	- 3 ~-
1	Cable 3x2.5 mm <sup>2</sup> , 15m	W214845	1	-	-	35	Rubber plug	W214187	1	1	1
	Cable 3x1.5 mm <sup>2</sup> , 20m	W214846	-	1	-	36	Cable inlet cpl. (8,38,39)	W743411	1	1	1
	Cable 4x1.5 mm <sup>2</sup> , 20m	W214847	-	-	1	37	Float switch	W214842	1	1	1
	Cable CSA SOW 3xAWG14, 15m	W367173	1	-	-	40	Cable sleeve	W214826	1	1	1
	Cable CSA SOW 3xAWG16, 20m	W367174	-	1	-	41	Clamp	W209900	1	1	1
	Cable CSA SOW 4xAWG16, 20m	W367175	-	-	1	42	Float holder clamp	W213843	1	1	1
3	Cable inlet cpl. Incl.2,4,5	W214639	1	1	1	43	Capacitor	W740194	-	1	-
6	Cable sleeve	W214394	1	-	-	44	Capacitor holder	W214841	-	1	-
	Cable sleeve	W214839	-	1	-	45	Spring washer	W58956	1	1	1
	Cable sleeve	W214838	-	-	1	46	Washer	W45883	1	1	1
7	Blind plug	W214828	1	1	1	47	Bearing bracket upper	W208138	1	1	1
8	Washer	W214825	1	1	1	48	O ring	W65021	1	1	1
9	Rubber gasket	W214829	1	1	1	49	O ring	W65115	2	2	2
10	Washer	W214833	1	1	1	50	Stator (see page 13)				
11	Contacteur cover	W212849	1	1	1	51	Stud bolt	W69617	2	2	2
12	Nut	W84207	15	15	15	52	Inner casing	W212831	1	1	1
13	Wiring diagram 1 phase	W214834	1	1	-	53	Ball bearing upper	W61007	1	1	1
	Wiring diagram □	W214836	-	-	1	54	Rotor with shaft	W730077	1	1	1
	Wiring diagram Y	W214835	-	-	1	55	O ring	W65081	1	1	1
16	Screw	W209902	5	5	4	56	Bearing bracket lower	W212782	1	1	1
17	Capacitor holder	W214821	1	-	-	57	Grease nipple	W214197	1	1	1
18	Capacitor compl.	W214830	1	-	-	58	Ball bearing lower	W61008	1	1	1
19	O-ring	W65112	2	2	2	59	Circlip	W51573	1	1	1
21	Stud bolt	W214111	3	3	3	60	Distance sleeve	W214196	1	1	1
23	Washer	W51163	2	2	2	61	Wearing sleeve	W214193	1	1	1
24	Teflon washer	W214622	2	2	2	62	Oring	W65023	2	2	2
25	Contacteur (see page 13)					63	Shaft seal without sleeve incl.pos.55,62,64	W214785	1	1	1
26	Contacteur holder	W214871	1	1	1		Shaft seal with seal incl.pos.55,61,62,64.	W214786	1	1	1
27	Data plate (CE)	W743583	1	1	1	64	V - ring	W214198	1	1	1
	Data plate (CSA)	W743612	1	1	1	65	Wear plate	W213189	1	1	1
28	Rivet	W65431	4	4	4	66	Washer	W51164	6	6	6
29	Discharge 2" for hose	W214251	1	1	1	67	Trimming spacer 0.30 mm	W214194	x	x	x
	Discharge 2" BSP-thread	W214280	1	1	1	68	Impeller 50Hz	W213328	1	1	1
	Discharge 2" NPT thread	W214489	1	1	1		Impeller 60Hz	W213358	1	1	1
30	Discharge gasket	W214186	1	1	1	69	Nut	W84209	2	2	2
31	Stud bolt	W69609	2	2	2	70	Diffusor	W213323	1	1	1
32	Outer casing	W211102	1	1	1	71	Strainer	W213175	1	1	1
33	Lubrication plate	W209203	1	1	1	72	Contacteur cover high	W724064	1	-	-
34	Rivet	W65431	2	2	2	73	High stainless steel strainer	W743582	x	x	x

### STATOR and CONTACTOR Part Numbers

Power supply	Stator	Contactora	Stator Unit (50 + 52)
110V - 1 - 50Hz	W740386	W209922	W743409
220/240V - 1 - 50Hz	W740387	W209923	W743410
380/415V - 3 - 50Hz	W740384	W743441	W743407
110V - 1 - 60Hz	W740386	W209922	W743409
220V - 1 - 60Hz	W733415	W209923	W367215
440V - 3 - 60Hz	W740384	W743441	W743407



# WEDA PUMP

World leader in professional submersible drainage pumps

*page left intentionally blank for your convenience.*



**Delta Pompen B.V.**

P.O. Box 310  
7570 AH Oldenzaal  
The Netherlands

Tel. : +31 (0)541 571667

Fax.: +31 (0)541 571669

E-mail: [info@wedapump.com](mailto:info@wedapump.com)

Internet: <http://www.wedapump.com>

Lübeckstraat 12  
7575 EE OLdenzaal

**SERVICE AND GUARANTEE.**

WEDAPUMP.COM is represented worldwide by a well-established service organization. Contact your local WEDAPUMP sales office if you require more information about servicing. Or left mentioned address.

wedapump.com reserves the right to change specifications without notice