

WEDA PUMP

World leader in professional submersible drainage pumps

SPAREPARTS CATALOGUE

RC4060



SPARE PARTS CATALOGUE

RESERVELSTÄLLNING

Följande uppgifter ska lämnas vid beställning av reservdelar för att undvika leveransfel :

1. Maskintyp.
2. Vältens serinummer.
3. Antal av önskad reservdel.
4. Reserdelens artikelnummer.
5. Reservedelens benämning.
6. Måttuppgifter vid beställning av metervara.

ERSATZTEILBESTELLUNG

Zur Vermeidung von Fehllieferungen sind bei der Bestellung von Ersatzteilen folgende Angaben zu machen :

1. Mashinentyp.
2. Herstellungsnummer.
3. Bestellmenge. (Quantity)
4. Ersatzteilbenennung. (Part N°)
5. Ersatzteilbenennung. (Description)
6. Massangaben bei Bestellung von Meterware.

PEDIDO DE RECAMBIOS

Para evitar errores en las entregas, deberá indicarse los siguientes datos al hacer un pedido de recambios :

1. Tipo de máquina.
2. Número de serie.
3. Cantidad de piezas deseadas. (Quantity)
4. Número de artículo de la pieza de recambio. (Part N°)
5. Denominación de la pieza. (Description)
6. Indíquese la medida al solicitar un artículo que se expide por metros.

RESERVEDELEN BESTELLEN

Om foutieve leveringen te voorkomen, vermeld bij uw bestelling de volgende informatie:

1. Type van de machine (pomp)
2. Machine serienummer
3. Aantal benodigd
4. Onderdeel nummer(s)
5. Onderdeel omschrijving
6. Afmetingen indien per lengte besteld wordt.

ORDERING SPARE PARTS

To avoid errors in delivery, please give the following information when ordering spare parts :

1. Type of machine.
2. Machine serial number.
3. Quantity required.
4. Part number.
5. Parts description.
6. Dimensions when ordering per length.

ORDINI DI RICAMBI

Per evitare errori nelle consegne di ricambi, Vi preghiamo di comunicarci le seguenti informazioni al momento dell'ordinazione :

1. Tipo di macchina.
2. Numero di serie della macchina.
3. Quantità dei pezzi desiderati. (Quantity)
4. Numero di codice del pezzo. (Part N°)
5. Descrizione del pezzo di ricambio. (Description)
6. Misura, in caso di ordine per metro.

COMMANDE DE PIÈCES DE RECHANGE

Les indications suivantes doivent être fournies lors de la commande de pièces de rechange, afin d'éviter toute erreur de livraison :

1. Type de machine.
2. Numéro de série.
3. Quantité désirée de pièce de rechange. (Quantity)
4. Numéro de la pièce de rechange. (Part N°)
5. Description de la pièce de rechange. (Description)
6. Longueur en cas de commande par mètre.

SPARE PARTS

Note : To place spare parts order, use :

- The serial number of the machine
- The description and part number;

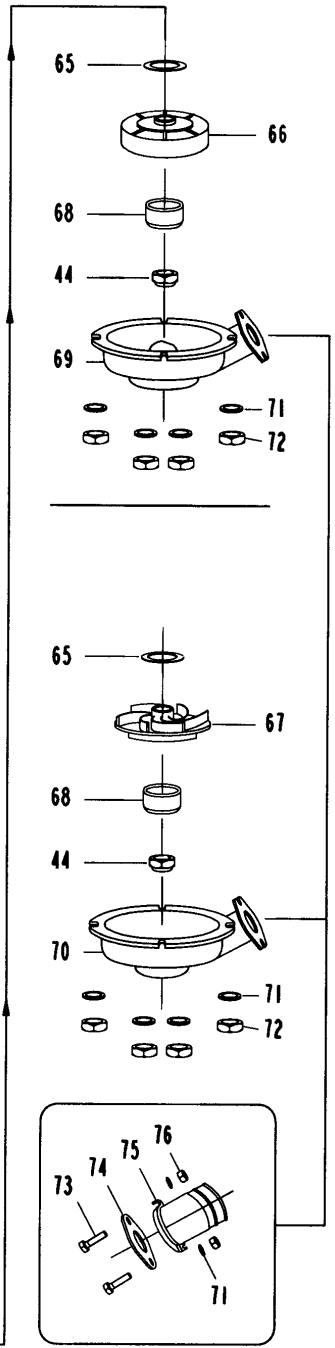
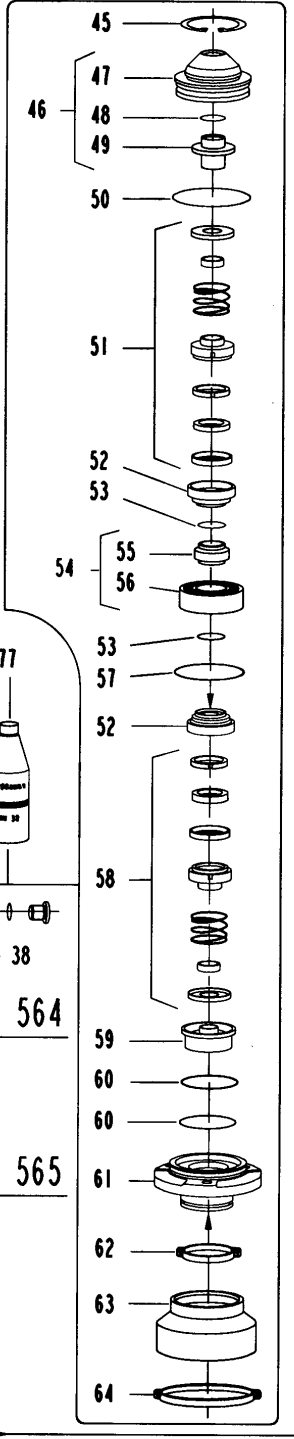
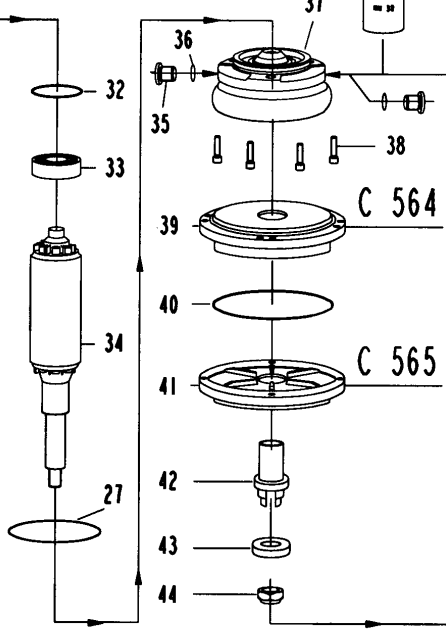
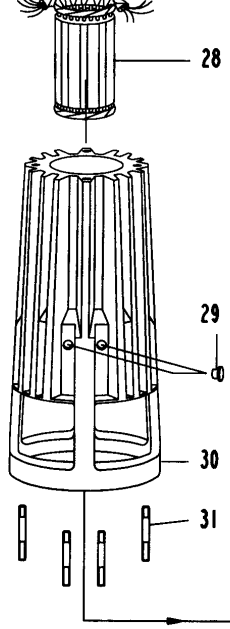
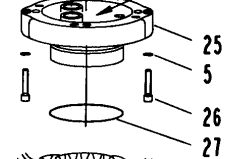
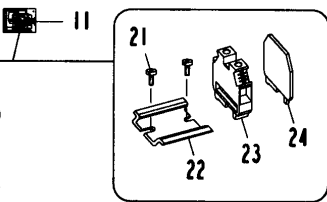
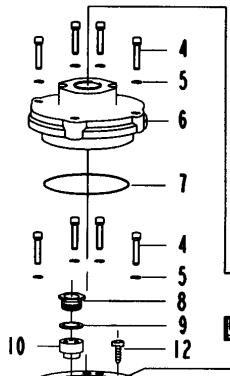
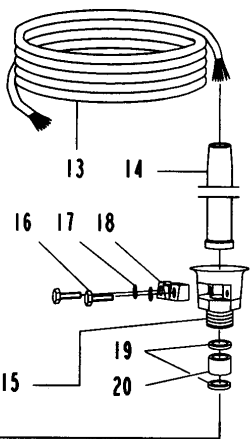
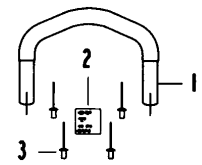
RC 4060									
Ref	Designation	P/N	Qty		Re f	Designation	P/N	Qty	
			50H z	60H z				50Hz	60Hz
1	Handle complete	W253381	1	1	44	Impeller nut	W254232	2	2
2	Data plate (CE)	W743583	1	1	45	circlip	W50671	1	1
3	Rivet	W65430	4	4	46	Seal casing (incl pos 47,48,49) *	W254363	1	1
4	Screw	W75693	8	8		Seal casing (incl pos 47,48,49) **	W743568	1	1
5		W58963	10	10	50	O-ring	W65033	1	1
6	Cover	W714007	1	1	51	Upper seal *	W254063	1	1
7	O-ring	W65046	1	1		Upper seal **	W743563	1	1
8	Screw	W294127	2	2	52	Holder	W254031	2	2
9	Washer	W294126	2	2	53	O-ring	W65016	2	2
10	Packing box	W254408	2	2	54	Bearing unit	W254038	1	1
11	Wiring diagram	W740087	1	1	57	O-ring	W65105	1	1
12	Screw	W78701	1	1	58	Lower seal *	W254077	1	1
13	Cable 7x2.5 mm2 20m	W254397	1	1		Lower seal **	W743564	1	1
14	Cable sleeve	W254420	1	1	59	Seal holder *	W254342	1	1
15	Cable inlet cpl (incl pos 16,17,18 19,20)	W209563	1	1		Seal holder **	W743566	1	1
21	Screw	W80055	2	2	60	O-ring	W65175	2	2
22	Contact holder	W214871	1	1	61	Bearing bracket	W252339	1	1
23	Short circuit device	W254490	6	6	62	Clamp	W254344	1	1
24	End plate	W254491	1	1	63	Oil bag	W253341	1	1
25	Top bracket	W714005	1	1	64	Clamp	W254345	1	1
26	Screw	W75695	2	2	65	Trimming washer	W254229	8	8
27	O-ring	W65121	2	2	66	Impeller 50Hz	W252455	1	
28	Stator see page 13		1	1	67	Impeller 60Hz	W252375		1
29	Rubber plug	W224880	4	4	68	Protective housing	W254231	1	1
30	Pump housing	W714003	1	1	69	Volute 50Hz	W251457	1	
31	Stud bolt	W69627	4	4	70	Volute 60Hz	W251370		1
32	O-ring	W65024	1	1	71	Washer	W51171	6	6
33	Ball bearing	W61001	1	1	72	Nut	W84209	4	4
34	Rotor	W724001	1	1	73	Screw	W76331	2	2
35	Oil plug	W254042	2	2	74	Discharge gasket	W743466	1	1
36	O-ring	W65006	2	2	75	Discharge 4' for hose	W203564	1	1
37	Seal package	W253362	1	1		Discharge 4' BSP thread	W203482	1	1
38	Screw	W75659	4	4		Discharge 4' NPT thread	W203572	1	1
39	Wear plate 50Hz	W252452	1			Discharge 3' for hose	W203562	1	1
40	O-ring	W65264	1			Discharge 3' BSP thread	W203484	1	1
41	Wear plate 60Hz	W253377		1		Discharge 3' NPT thread	W203570	1	1
42	Driving sleeve	W254228	1	1	76	Nut	W84210	2	2
43	Washer	W254230	1	1	77	Oil 2 l	W60015	x	x

* Pumps with manufacturing N° below 1971 .

** Pumps with manufacturing N° above 2000 .

STATOR Part Numbers

Power supply	Stator	Stator Unit (28 + 30)
380-400V - 3 - 50Hz	W724000	W743578
415V-3-50Hz	W724000	W743578
440-460V - 3 - 60Hz	W724000	W743578
500V - 3 - 50Hz	W724018	W367679



WEDA PUMP

World leader in professional submersible drainage pumps

**Erklæring om overensstemmelse • Konformitætserklæring Declaration of conformity • Declaración de conformidad
Déclaration de conformité • Όβαίωση συμφωνίας • Dichiarazione di conformità • Overeenkomstigheidsverklaring • Erkle-
ring om overensstemmelse • Declaração de conformidade • Yhdenmukaisuusvakuutus • Försäkran om överensstämmelse**

Producentens navn • Name des Herstellers • Manufacturer's name
Nombre del fabricante • Nom du fabricant • Ονομα κατασκευαστή
Nome del costruttore • Fabrikant naam • Producentens navn
Nome do fabricante • Valmistajan nimi • Tillverkarens namn

Delta Pompen BV
Lübeckstraat 12
7575 EE Oldenzaal
The Netherlands

Maskintype • Pumpen Type • Machine type • Modelo de máquina
Type machine • Τύπος μηχανήματος • Tipo di macchina • Machinetype
Maskintype • Tipo de máquina • Konetyypit • Maskintype

**RL2000, RL2010, RL2030, RL4140, RL4150
RL4060, RL6070, RL6090, RC 4060**

da Vi erklærer på eget ansvar, at følgende produkt som er omfattet af denne erklæring, og som er forsynet med CE-mærke, er i overensstemmelse med følgende standard(er) eller andre normative dokument(er): EN292-1, EN292-2, EN 809, EN 60204-1, EN 55014 i henhold til bestemmelserne i direktiv 89/392/EEC revision 91/44/EEC, 91/368/EEC, Lavspænding 73/23/EEC, EMC-direktivet 89/336/EEC, revision 92/31/EEC, 93/44/EEC og 93/68/EEC.

de Wir erklären in alleiniger Verantwortung, daß das Produkt auf das sich diese Erklärung bezieht, und welches mit dem CE-Zeichen versehen ist, mit der/den folgenden Norm(en) oder normativen Dokument(en) übereinstimmt: EN292-1, EN292-2, EN 809, EN 60204-1, EN 55014 gemäß den Bestimmungen der Richtlinie 89/392/EEC Revision 91/44/EEC, 91/368/EEC, Niederspannungsrichtlinien 73/23/EEC, EMC-Richtlinien 89/336/EEC, Revision 92/31/EEC, 93/44/EEC und 93/68/EEC.

en We declare under our sole responsibility that the product to which this declaration relates, and which is equipped with a CE-mark, is in conformity with the following standard(s) or other normative document(s): EN292-1, EN292-2, EN 809, EN 60204-1, EN 55014 following the provisions of Directive 89/392/EEC revision 91/44/EEC, 91/368/EEC, the Low Voltage Directive 73/23/EEC, the EMC-Directive 89/336/EEC, revision 92/31/EEC, 93/44/EEC and 93/68/EEC.

es Declaramos bajo nuestra única responsabilidad que el producto al que hace referencia esta declaración, y que lleva la marca CE, es conforme con las siguientes normas y otros documentos normativos EN292-1, EN292-2, EN 809, EN 60204-1, EN 55014. Todo ello de acuerdo con lo dispuesto en la directiva, 89/392/EEC, revisión 91/44/EEC, 91/368/EEC, la Directiva de Baja Tensión 73/23/EEC, la Directiva EMC 89/336/EEC, revisiones 92/31/EEC, 93/44/EEC y 93/68/EEC

fr Nous certifions que le produit, objet de cette déclaration, qui est équipé d'une marque CE est conforme aux standards suivants ou autres documents normatifs EN292-1, EN292-2, EN 809, EN 60204-1, EN55014 conformément aux dispositions de Directives, 89/392/EEC, révision 91/44/EEC, 91/368/EEC, la Directive de basse tension 73/23/EEC, la Directive EMC 89/336/EEC, révision 92/31/EEC, 93/44/EEC et 93/68/EEC.

el Βεβαιώνουμε με δική μας ευθύνη ότι το προϊόν, που καλύπτεται από αυτήν την βεβαίωση και είναι εφοδιασμένο με CE-σήμανση, βρίσκεται σε συμφωνία με τα ακόλουθα πρότυπα ή άλλα καθοδηγητικά έγγραφα: EN292-1, EN292-2, EN 809, EN 60204-1, EN 55014 σύμφωνα με τους όρους των οδηγιών 89/392/ΕΕC τροποποίηση 91/44/ΕΕC, 91/368/ΕΕC, την Οδηγία Χαμηλής Τάσης 73/23/ΕΕC, την Οδηγία EMC 89/336/ΕΕC, τροποποίηση 92/31/ΕΕC 93/44/ΕΕC και 93/68/ΕΕC.

it Noi dichiariamo sotto nostre esclusiva responsabilità che il prodotto a cui questa dichiarazione si riferisce, e che è provvisto di marchio CE, è conforme ai seguenti standard o altri documenti normativi: EN 292-1, EN 292-2, EN 809, EN 60204-1, EN 55014 secondo i requisiti della direttiva 89/392/CEE, integrazione 91/44/CEE, 91/368/CEE, direttiva Bassa Tensione 73/23/CEE, direttiva Compatibilità Elettromagnetica 89/336/CEE e successive integrazioni 92/31/CEE, 93/44/CEE e 93/68/CEE.

nl Wij verklaren geheel onder eigen verantwoordelijkheid dat het produkt waarop deze verklaring betrekking heeft, en is uitgerust met een CE-merk, in overeenstemming is met de volgende normen: EN292-1, EN 292-2, EN 809, EN 60204-1, EN 55014 volgens de bepalingen van de Machineryrichtlijn 89/392 EEC, herziene uitgave 91/44/EEC, 91/368/EEC, de Laagspanningsrichtlijn 73/23/EEC, de EMC-richtlijn 89/336/EEC, herziene uitgave 92/731/EEC, 93/44/EEC en 93/68/EEC.

no Vi erklærer på eget ansvar, at følgende produkt som dekkes av denne erklæring, og som er CE merket, er i overensstemmelse med følgende standarder eller andre normative dokumenter: EN292-1, EN292-2, EN 809, EN 60204-1, EN 55014 i følge bestemmelsene i Direktiv 89/392/EEC, revisjon 91/44/EEC, 91/368/EEC, low voltage-direktivet herziene utgave 73/23/EEC, EMC-direktivet 89/336/EEC, revisjon 92/31/EF, 93/44/EEC og 93/68/EEC.

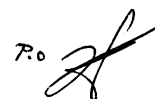
pt Declaramos sob nossa única responsabilidade que o produto a que se refere esta declaração, e que está equipado com uma marca CE, está em conformidade com as seguintes normas ou outros documentos normativos: EN292-1, EN292-2, EN 809, EN 60204-1, EN 55014 em conformidade com as disposições da Directiva 89/392/EEC, revisão 91/44/EEC, 91/368/EEC, a Directiva de Baixa Voltagem 73/23/EEC, a Directiva EMC 89/336/EEC, revisão 92/31/EEC, 93/44/EEC e 93/68/EEC.

fi Vakuutamme omalla vastuullamme että kone, jota tämä vakuutus koskee ja joka on varustettu CE-merkillä, on yhdenmukainen seuraavien normien ja ohjeellisten asiakirjojen kanssa: EN292-1, EN292-2, EN 809, EN 60204-1, EN 55014 noudattaen direktiivien 89/392/EEC, muutos 91/44/EEC, 91/368/EEC, jännitteitä koskeva direktiivi 73/23/EEC, sähkömagneettista yhteensopivuutta koskeva direktiivi 89/336/EEC, muutokset 92/31/EEC, 93/44/EEC ja 93/68/EEC etoja.

sv Vi försäkrar under eget ansvar att produkten som omfattas av denna försäkran, och som är försedd med CE-märke, är i överensstämmelse med följande standard eller andra regelgivande dokument: EN292-1, EN292-2, EN 809, EN 60204-1 och EN 55014 enligt villkoren i direktiv 89/392/EEC, revision 91/44/EEC, 91/368/EEC, lågspänningsdirektivet 73/23/EEC, och EMC-direktivet 89/336/EEC, reviderat genom 92/31/EEC, 93/44/EEC och 93/68/EEC.

2001-10-01

J.L VOLE



Plant Manager

WEDA PUMP

World leader in professional submersible drainage pumps

page left intentionally blank for your convenience.

WEDA PUMP

World leader in professional submersible drainage pumps

Delta Pompen B.V.

P.O. Box 310
7570 AH Oldenzaal
The Netherlands

Tel. : +31 (0)541 571667

Fax.: +31 (0)84 2242375

E-mail: info@wedapump.com

Internet: <http://www.wedapump.com>

Lübeckstraat 12
7575 EE Oldenzaal

SERVICE AND GUARANTEE.

WEDAPUMP.COM is represented worldwide by a well-established service organization. Contact your local WEDAPUMP sales office if you require more information about servicing. Or left mentioned address.